

# Lightlift 15.70

## tracked booms

**Working Height** 15.4m  
**Horizontal  
Outreach** 6.6m

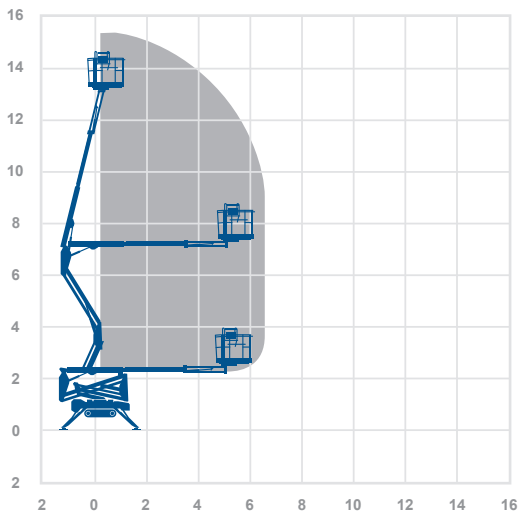
Closed Length	4.02m
Closed Height	1.99m
Rails Up / Fixed Rails	
Closed Width	0.75m
DeckSize	1.33m x 0.69m
Rotation	360°
SWL	230kg
Weight	1950kg
Outrigger Footprint	2.8m x 2.8m
Min Op Width	2.8m

**Manufacturer**  
Hinowa



15.4m  
6.6m

**Working Envelope**



[contact@rapidaccess-gulf.com](mailto:contact@rapidaccess-gulf.com)  
[rapidaccess-gulf.com](http://rapidaccess-gulf.com)