


# Emergency Lowering Instructions

## Genie Runaround

### Machine Range: GR15 and GR20



If there is a machine breakdown or if the operator becomes incapacitated it may be necessary to perform an emergency rescue from the ground. Emergency rescues must be rehearsed routinely.



### Warning

While every effort is made to ensure that the information provided is accurate and up to date, we are not able to guarantee the completeness and accuracy of these instructions and you should therefore not rely on them. Nationwide Platforms Ltd accepts no liability for reliance on the contents of this information sheet which has been produced as additional GUIDANCE ONLY and is not intended to replace the manufacturer's manual. You should refer to the manufacturer's manual.

You should not operate this Mobile Elevating Work Platform (MEWP) unless you are suitably trained and fully familiarised with its operation and the emergency procedures set out in the manufacturer's manual. Operating plant necessarily involves risk of injury to the person.



### A

#### Before starting work consider the following:

- Will there be a second person in the vicinity of the machine to undertake a rescue if required?
- Have both the operator and rescuer been familiarised with the ground controls?
- Can the rescuer gain access to the ground controls? i.e. Ensure that the machine is not parked with the ground controls facing a wall or similar obstruction.
- Is the key in the ground control to allow the rescuer to switch power from basket to ground controls?



### B

#### Before attempting to lower platform:

- It is imperative that an inspection be carried out to ensure the lowering of the platform is not hindered by obstructions such as steel work, pipes, cables, etc.
- If the operator in the cage has been incapacitated ensure they will not be put in additional danger by operation of the platform. Remember that completing a rescue in 4-6 minutes may be critical.
- If unsure seek help (it may be necessary to carry out a mid air rescue).
- Carefully plan each action before starting to lower the platform.

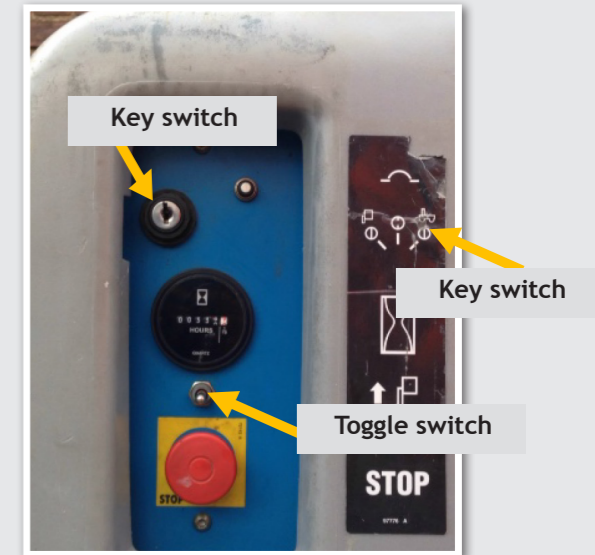


### C

#### If there are no obstructions and the electrics are functional:

In order of preference, always attempt C before attempting D

- 1 Check for any obstructions.
- 2 Turn switch to ground position.
- 3 Hold the toggle switch down. The machine will start to lower.



(Panels may vary slightly in appearance depending on year and model but all have the same functions)

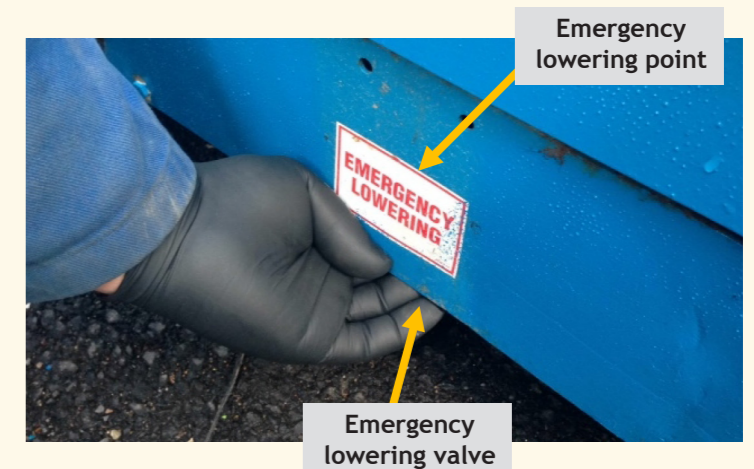


### D

#### If the electrics fail:

In the case of an electrical breakdown it may be necessary to lower the boom using the manual lowering system.

- 1 The emergency lowering valve is located under the bottom panel at the rear of the machine.
- 2 Once located pull the plunger towards you and observe the mast lowering.




### E

#### Technical advice and training courses:

If the controls do not function or you are unsure of their operation please call our Technical Support team on 0845 745 0000 option 2.

As the UK's largest training provider in our industry, we have a range of courses to help you and your operators to work efficiently and safely at height.

Contact us for full details of courses and dates.