

Emergency Lowering Instructions

Genie Large Diesel Boom Lifts

Machine Range: ZX135/70



If there is a machine breakdown or if the operator becomes incapacitated it may be necessary to perform an emergency rescue from the ground. Emergency rescues must be rehearsed routinely.



Warning

While every effort is made to ensure that the information provided is accurate and up to date, we are not able to guarantee the completeness and accuracy of these instructions and you should therefore not rely on them. Nationwide Platforms Ltd accepts no liability for reliance on the contents of this information sheet which has been produced as additional GUIDANCE ONLY and is not intended to replace the manufacturer's manual. You should refer to the manufacturer's manual.

You should not operate this Mobile Elevating Work Platform (MEWP) unless you are suitably trained and fully familiarised with its operation and the emergency procedures set out in the manufacturer's manual. Operating plant necessarily involves risk of injury to the person.



Before starting work consider the following:

- Will there be a second person in the vicinity of the machine to undertake a rescue if required?
- Have both the operator and rescuer been familiarised with ground controls?
- Can the rescuer gain access to the ground controls? i.e. Ensure that the machine is not parked with the ground controls facing a wall or similar obstruction.
- Is the key in the ground control to allow the rescuer to switch power from basket to ground controls?



Before attempting to operate any boom functions:

- It is imperative that an inspection be carried out to ensure the lowering of the boom is not hindered by obstructions such as steel work, pipes, cables, etc.
- If the operator in the cage has been incapacitated ensure they will not be put in additional danger by operation of the platform. Remember that completing a rescue in 4-6 minutes may be critical.
- If unsure seek help (it may be necessary to carry out a mid air rescue).
- Carefully plan each action before starting to lower the platform.

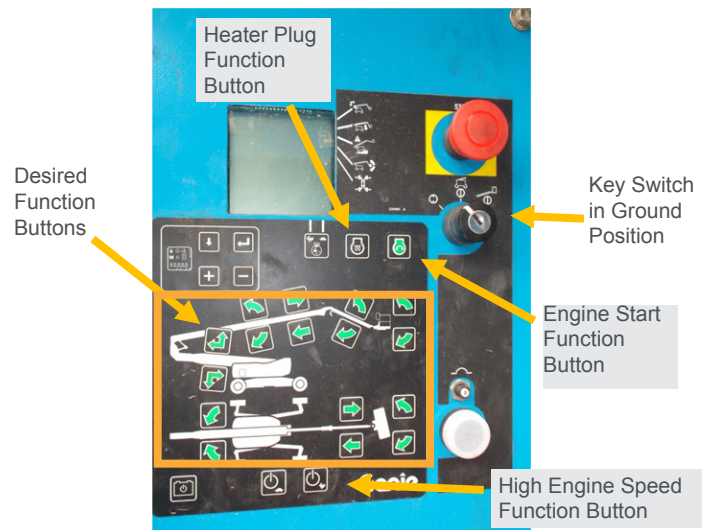
C

If there are no obstructions and the engine is functional:

In order of preference, always attempt C before attempting D

- 1 Check for any obstructions.
- 2 Switch the Key Switch fully clockwise to "Ground" position.
- 3 Pull Emergency Stop button out.
- 4 If the engine has been idle for some time it may be necessary to use the "heater plug" function button, to do this hold the button down for 10 seconds
- 5 Start engine using Start button.
- 6 Operate and hold Function button to high engine speed (denoted by hare symbol). Operate and hold desired Boom Function button (an alarm should sound to indicate boom is being lowered).

In the event of the cage overload being activated, the engine will not continue to run, use the auxiliary function to lower the boom as described in the next section of the plan.



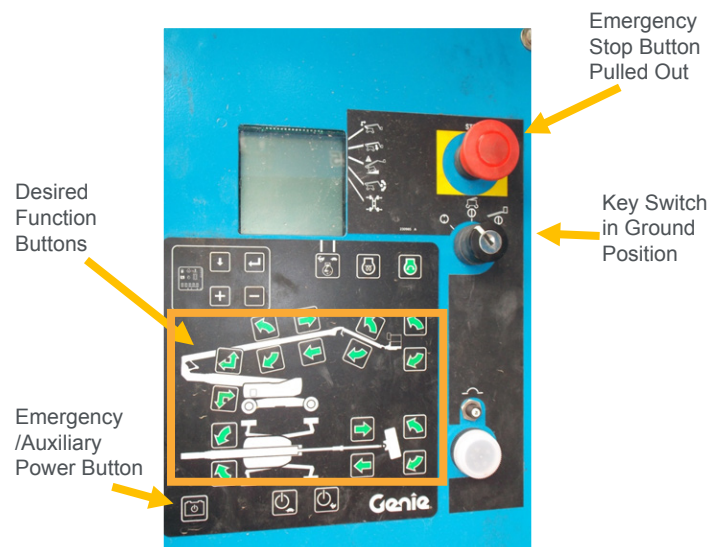
(Panels may vary slightly in appearance depending on year and model but all have the same functions)

D

In the case of engine failure, obstructions or trapped operator:

In the case where the boom cannot be directly lowered or if the operator is trapped, it is necessary to use the Auxiliary Power Function until the boom is clear. This will give the rescuer more precise control of each function. Once all obstructions have been cleared normal operation of the boom using the engine should be resumed.

- 1 Check for any obstructions.
- 2 If the engine is still running push the Emergency Stop button in to switch the machine off.
- 3 Switch the key switch to "base" position.
- 4 Pull out or twist Emergency Stop.
- 5 Operate and hold the Auxiliary Power button while simultaneously operating and holding the required Boom Function button. (an alarm should sound to indicate boom is being lowered).
- 6 Once the boom is clear of obstructions start the engine using the Start button.
- 7 Operate and hold the fast speed Function Enable button (denoted by hare symbol).
- 8 Operate and hold desired Boom Function button (an alarm should sound to indicate boom is being lowered).



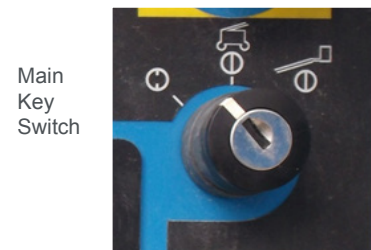
(Panels may vary slightly in appearance depending on year and model but all have the same functions)

E

Platform Out of Level Switch:

If the code P22 Platform out of level is displayed on the ground control LCD screen and platform level function buttons do not respond follow the procedure below :-

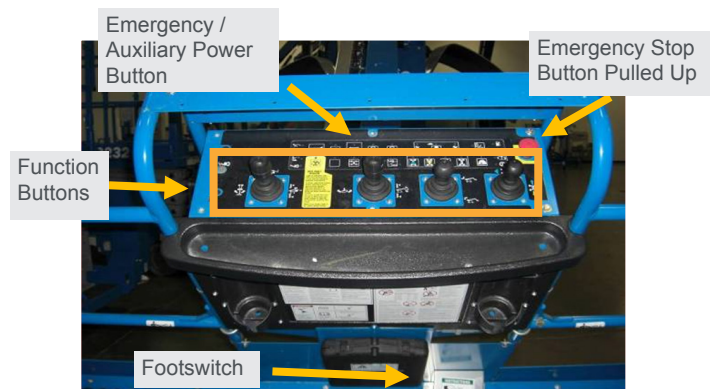
- 1 Turn the engine off.
- 2 Select the ground position with the ground control switch.
- 3 Remove the key and locate the bypass/recovery switch on the ground control panel, once located insert the key into the bypass/recovery key switch.
- 4 Turn the key switch to the P22 position.
- 5 Using the emergency power button and the platform level function on the ground control level the platform.
- 6 Turn the bypass/recovery key switch to the run position and return the key to the ground control key switch.
- 7 Push in and then pull out the emergency stop button.
- 8 If the P22 code is still displayed on the LCD screen lower the boom sections using the Auxiliary power button whilst simultaneously pressing the desired function button to operate the boom sections.
- 9 Once the machine is lowered isolate and tag the machine and report the fault immediately.



F

Operation of Emergency/Auxiliary Power from Platform:

- 1 Pull Emergency Stop button out
- 2 Locate the emergency/Auxiliary power button and press and hold.
- 3 The footswitch must be pressed down during emergency lowering from the platform
- 4 Simultaneously operate the desired function control to lower the desired boom sections.



G

Technical advice and training courses:

If the controls do not function or you are unsure of their operation please call our Technical Support team on 0845 745 0000 option 2.

As the UK's largest training provider in our industry, we have a range of courses to help you and your operators to work efficiently and safely at height.

Contact us for full details of courses and dates.