

**Working Height 47.72m**  
**Horizontal Outreach 24.15m**

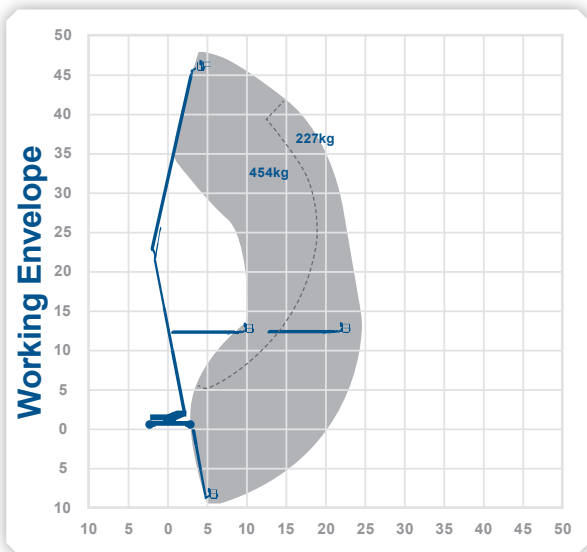
Closed Length	12.01m
Closed Height	4.27m
Closed Width	3.51m
Platform Size	2.44m x 0.91m
Rotation	Continuous
Max SWL (Unrestricted)	227kg
Max SWL (Restricted)	454kg
Weight	26500kg
Reach Below Ground	9.25m
Operational Full Width	5.49m

Alternative machines

T50JB  
Z135

Manufacturer

JLG



47.72m

24.15m