

Working Height 48.02m Horizontal Outreach 24.38m

Closed Length	16.18m
Closed Height	3.05m
Closed Width	2.49m
Platform Size	2.44m x 0.91m
Rotation	Continuous
Max SWL	340kg
Weight	23236kg
Reach Below Ground	0.91m
Operational Full Width	5.03m

Alternative machines

SX180

Manufacturer

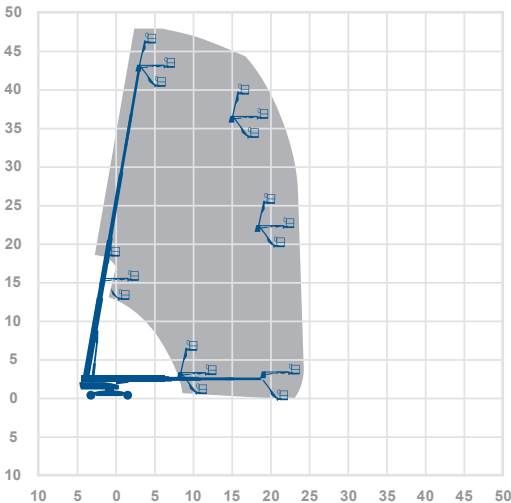
Genie

48.02m



24.38m

Working Envelope



contact@rapidaccess-gulf.com
rapidaccess-gulf.com